

Yokohama Campus(TYO4, TYO5, TYO6)

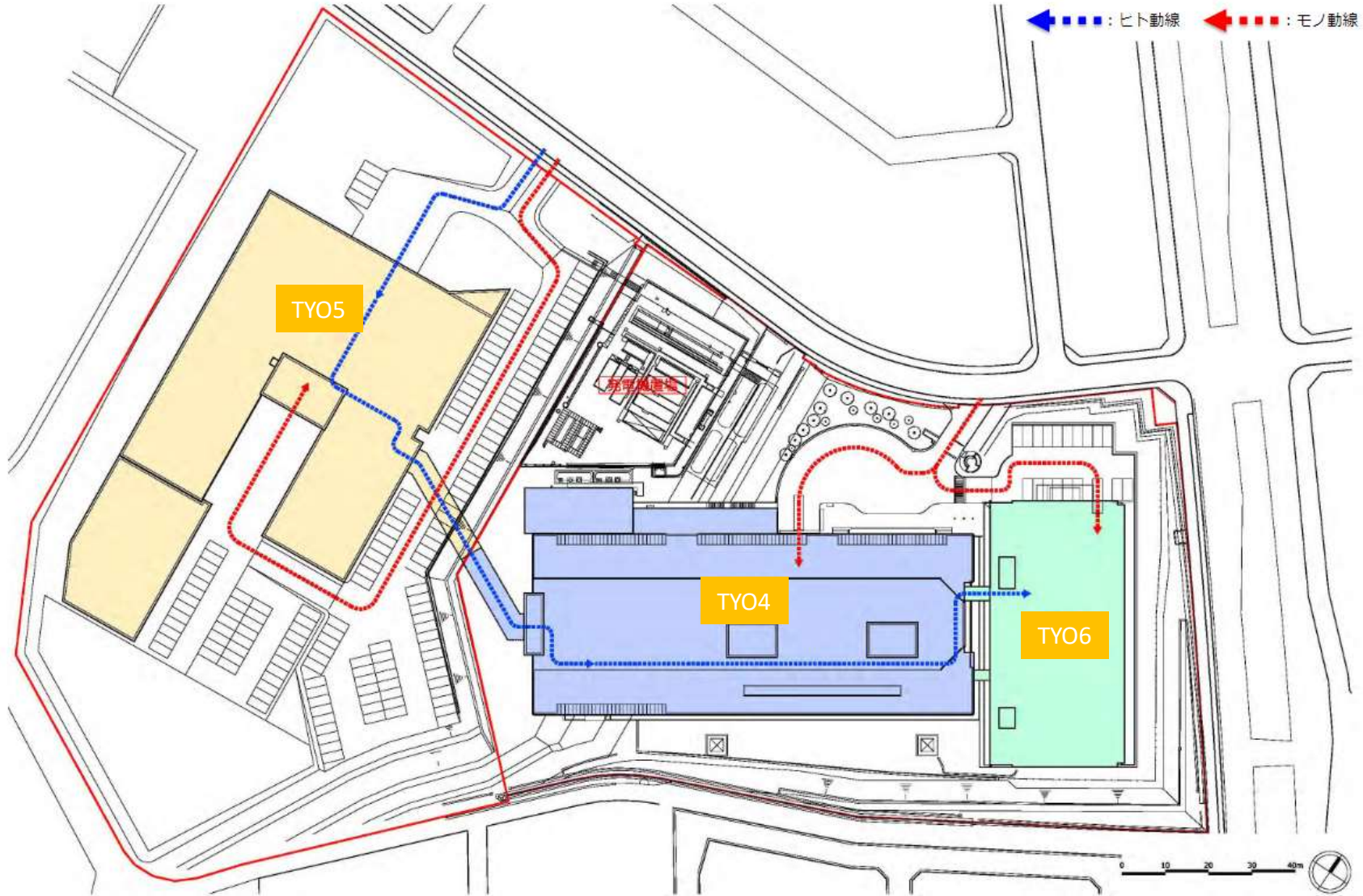




Table of Content

1. Overview
2. Facility Specification
3. Floor/Data Hall Design/Layout
4. Electrical System
5. Mechanical System
6. Fire Suppression
7. Security System/Layers
8. Certifications
9. VAS/Other Products

01.Overview

TYO5

Three facilities(TYO4, TYO5 and TYO6) located within the same campus in Yokohama provide support for a diverse range of outsourced IT systems and are well suited for enterprise customers such as those in the finance, distribution, manufacturing, and telecommunications industries.



Space

Building

Colocation Space	2,705 m2
Data center capacity	456 cabinets, 1.6MW
Seismic/flood resistant design	Steel-framed reinforced concrete
Parking	Available
Floor	4 floors above 1 basement floor
Floor type	Raised floor
Floor Load capacity	Slab: 500 kg/m ²
	Raised: 350 Kg/m ²
Ceiling Heigt	B2 : 6.00m 1,2,3,4F : 4.20m

Facilities

Power and Cooling

Power and Cooling Density	3.5kVA per cabinet
Utility Feeders	2
UPS Configuration	100kVA x 19, 50kVA x 20 N +1
Standby Power	N+1
Cooling Confoguration	N+1
Fuel Tank	Backup time: 24h

Fire Suppression

HSSD, Halon gas extinguishing

Security

24x 365 on-site security monitoring.

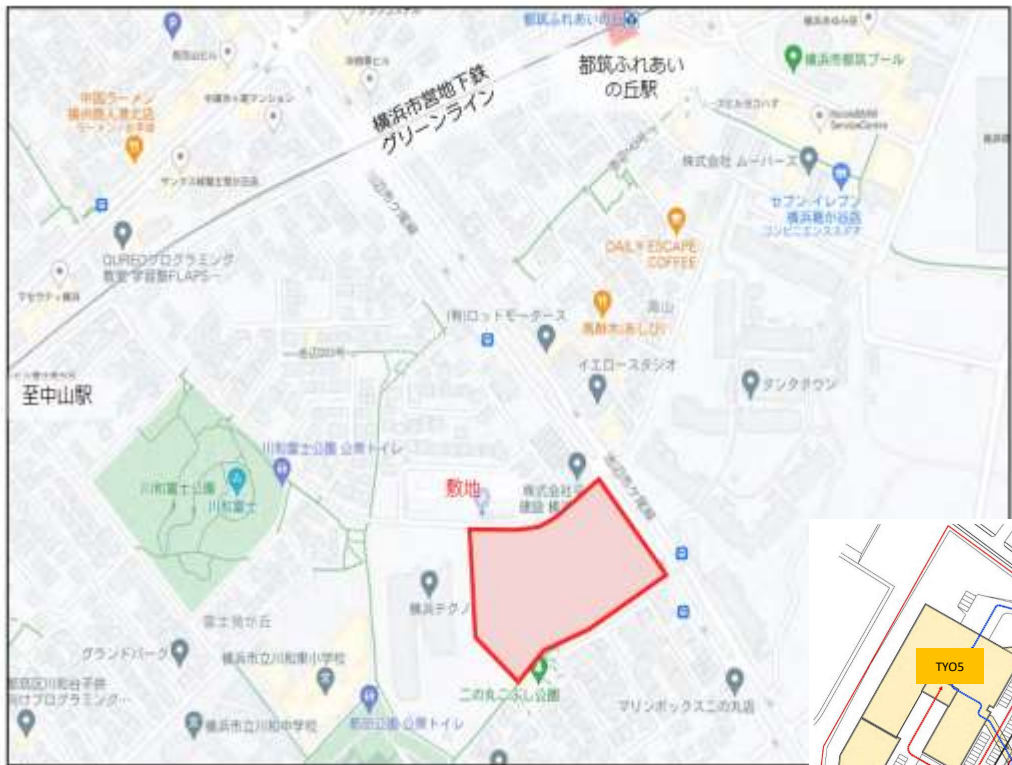
Location Map



TYO4,5,6 Address :

It is located in Ninomaru, Tsuzuki-ku, Yokohama City, Kanagawa Prefecture, about 5km northwest of Shin-Yokohama Station.

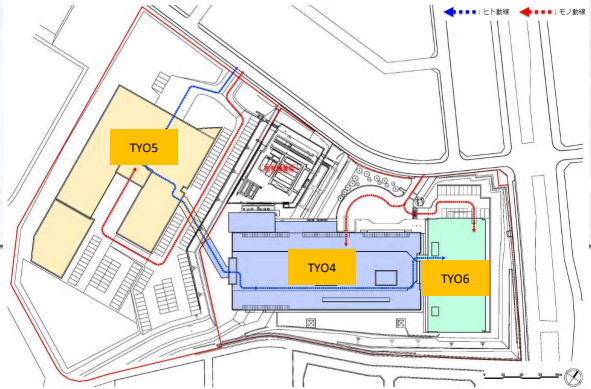
The nearest stations are the Yokohama Municipal Subway Green Line, Tsuzuki Fureai-no-Oka Station, a 5-minute walk from the station, and a 10-minute bus ride from The Tokyu Denentoshi Line and Ichigao Station.



(出典;Google MAP)



中域地図



Facility Specification – TY05

Space



Ideal for Service Providers and Enterprises

7 Independent Data Halls
456 Cabinets

Connectivity



Fiber optic cable access

Aerial and underground connectivity infrastructure are supported ;
DC to DC connectivity is available

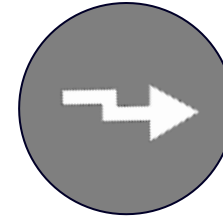
Power Density



3.8 MW

3.8MW-As of today

Redundant Design

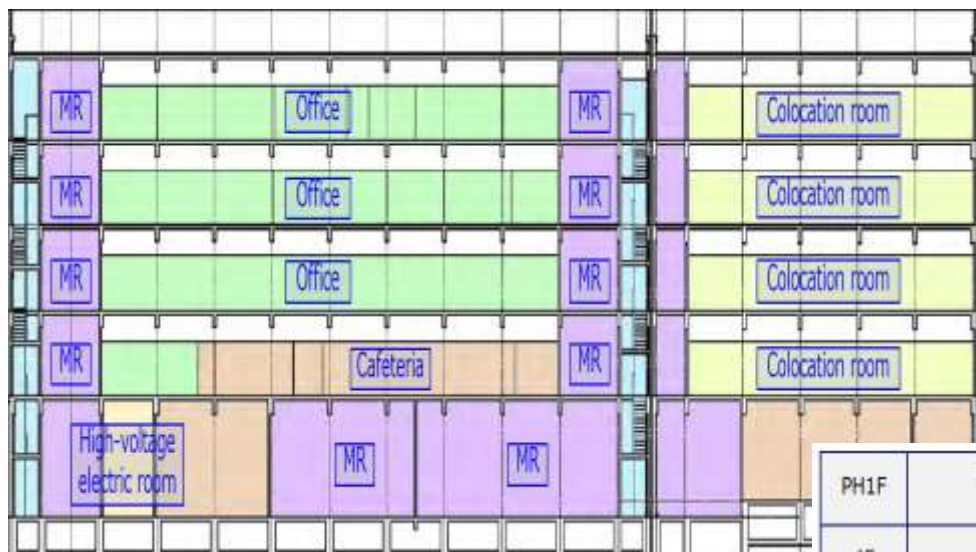


N+1

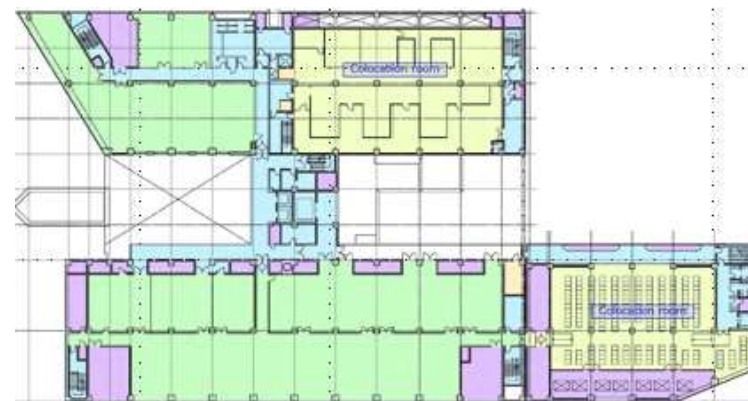
Concurrently maintainable design for MEP system.
Capacity components @ N + 1.

Floor Plan & Hall Layout

The standard layout of the data hall of the Digital Edge TYO5 data center. The 7 floors can be proposed by the DE can accommodate up to 456 racks.



PH1F	ELV MR, Air cooling outdoor unit space EV機械室・屋外機器場
4F	Office, Colocation Area (shared) 事務室・コロケーションエリア (共用)
3F	Office, Colocation Area (shared) 事務室・コロケーションエリア (共用)
2F	Office, Colocation Area (shared) 事務室・コロケーションエリア (共用)
1F	Entrance, Security, MDF, Colocation, Cafeteria エントランス・警備室・MDF・コロケーション・食堂
B 1F	Electrical room, MR 電気室・機械室



2F



1F

Design parameters:

- 2 Lines Utility Feeders of 1.6 MW
- N+1 for UPS Configuration
- N+1 for Standby Genset
- Redundant Power Distribution



High voltage power receiving panel



UPS



EPS (Power)



EPS (Telecom)

Cooling Design

Design parameters:

- N+1 for CRACs in each floor
- N+1 for each Zone
- CRAH and CRAC : 3.8 MW total

Cooling system

① Colocation room (ES)

This room is cooled by duct system.

Coil units and fan units are connected with ducts and chambers.

Air is blown from air outlets on the ceiling.

After the room, air returns to the machine room on the 1st floor through the colo room floor made of punching metal. Coil units and fan units : N+1.

② The others

The others are cooled by CRAH and DX under floor air conditioning.

The outdoor units of DX are installed on the roof.

The refrigerant pipes are connected through the isolated PS.

CRAH and DX are N+1 in one room.

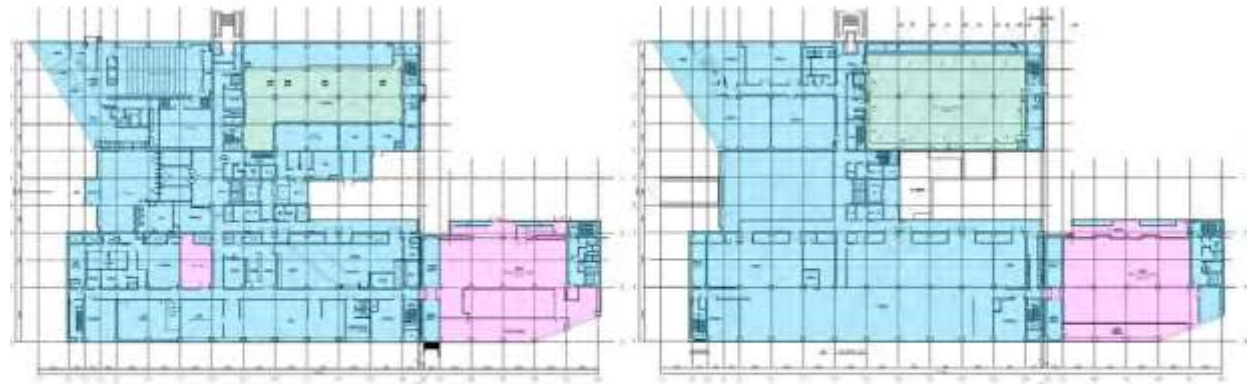


Turbo chiller

Fire Suppression

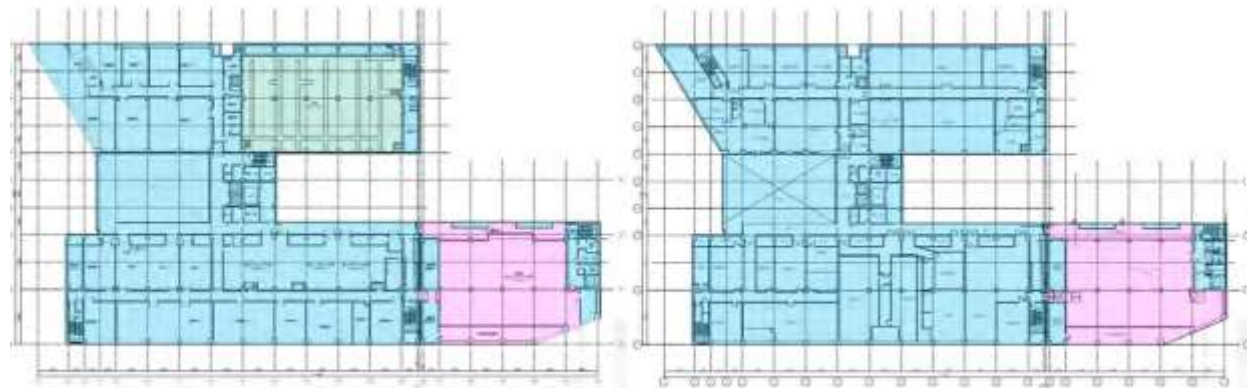
Design parameters:

- HSSD
- Halon gas extinguishing
- Pre-action Sprinkler for non-IT area
- Centrally controlled at Disaster Prevention Center



1st Floor

2nd Floor



3rd Floor

4th Floor



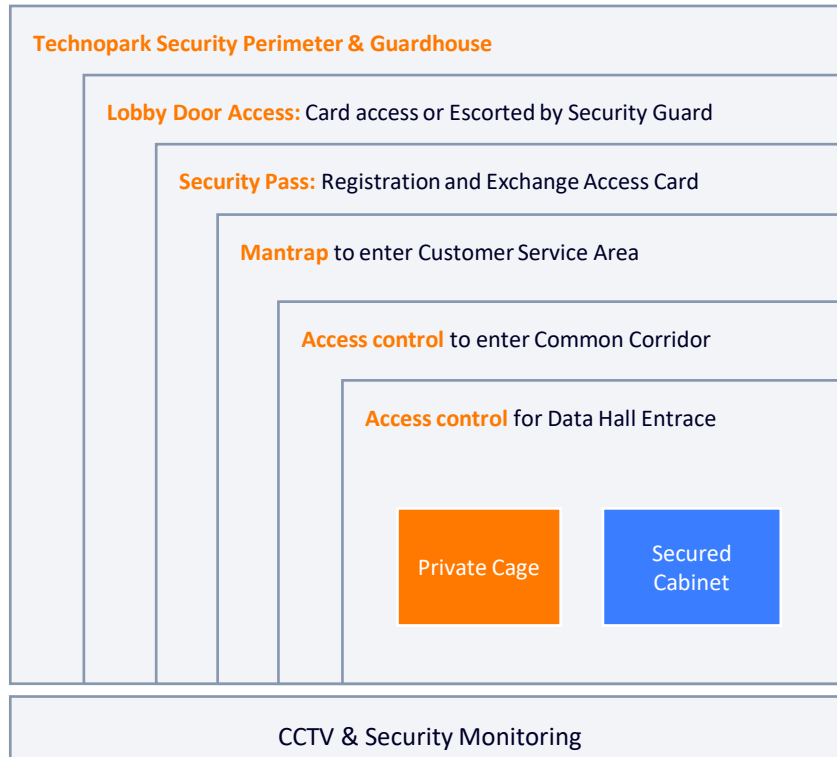
N2 gas fire extinguishing





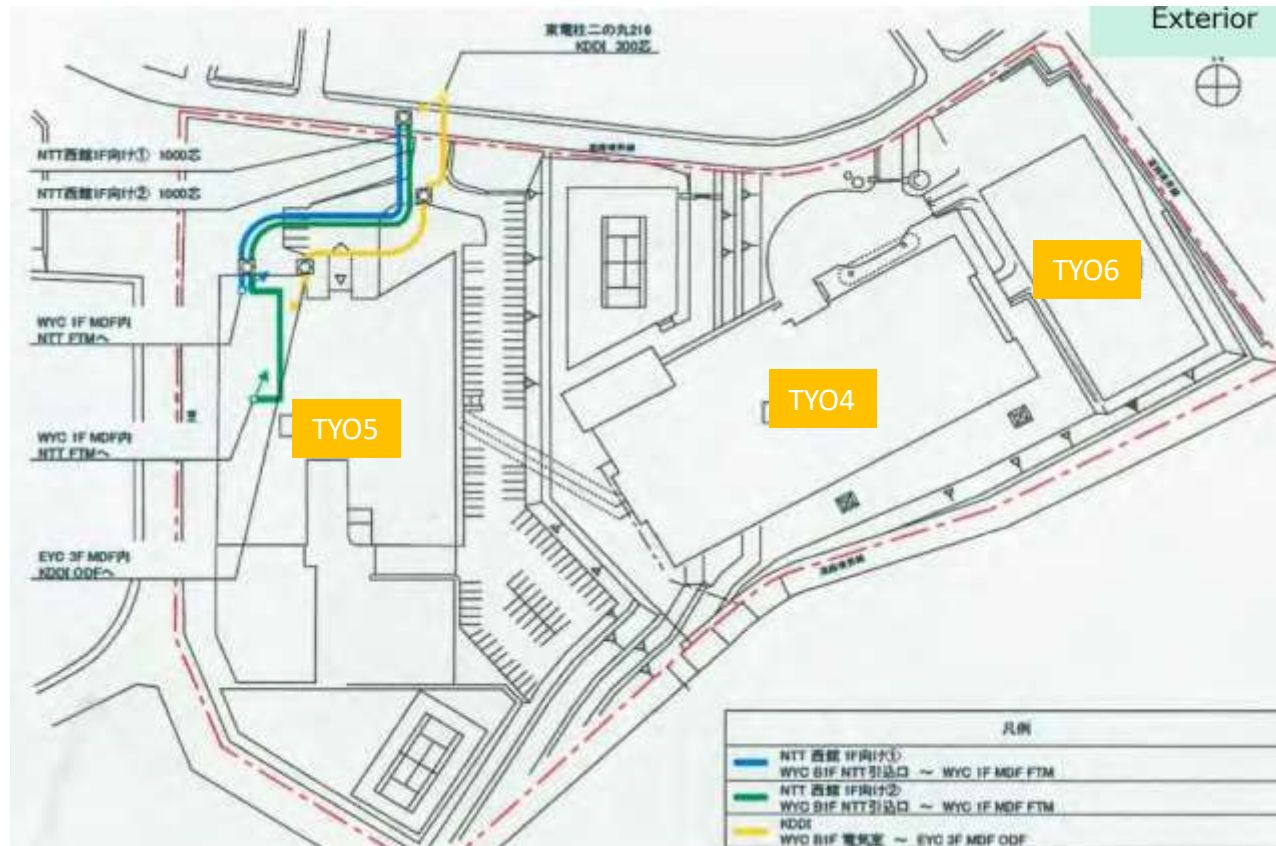
Security

7 layers of Physical Security



Communication route

Three communication route is available



Certifications

LGWAN

> LGWAN-ASP

- ファシリティサービス -

地方公共団体にLGWANという行政専用のセキュアなネットワークを介して、各種行政事務サービスを提供するASP基盤としてのファシリティ認定



> 情報セキュリティ マネジメントシステム

ISO27001

FIEC

> FISC認証

1F

3F

4F:CZ

金融機関等コンピュータシステムの安全対策基準



> 環境 マネジメントシステム

ISO14001



> PCI DSS

要件9 物理セキュリティ

要件12 セキュリティポリシー

クレジットカード業界のセキュリティ基準



> プライバシーマーク 使用許諾事業者

- 財団法人日本情報処理開発協会 -

Updating Required



Value Added Services

Cross Link, Cross Connects,
Remote Hands

Our Interconnect Solutions

Our wide range of interconnectivity options offer access to the wider Digital Edge platform, as we seek build the digital ecosystem of the future

Cross Connect

Cross Connect provides secure, low latency, and direct connectivity between any two end points within the same Digital Edge data center

Cross Link™

Cross Link™ provides high-speed, high-density, low-cost SDN driven metro connectivity service among Digital Edge data centers and other strategic locations within the same metro

EPIX

Our Edge Peering Internet Exchange (EPIX) enables large ISPs, cloud service providers, digital publishers, social media content operators, and other traffic heavy customers to directly exchange traffic within the peering community



Our Customer Care

We are committed to delivering best-in-class service to all customers across our platform

IOC

- Our Infrastructure Operations Center (IOC) is your **single point of contact** for all customer queries.
- Our multilingual team is available **24 hours** a day, **7 days** a week.

Customer Portal

- Our Customer Portal enables you to manage your data center services from wherever you are.



Make, review and manage your orders



Review your invoice



Request Remote Hands Support



Open and track requests – for fault reports, site access, shipping and more



Manage your accounts and permissions



Download useful documents